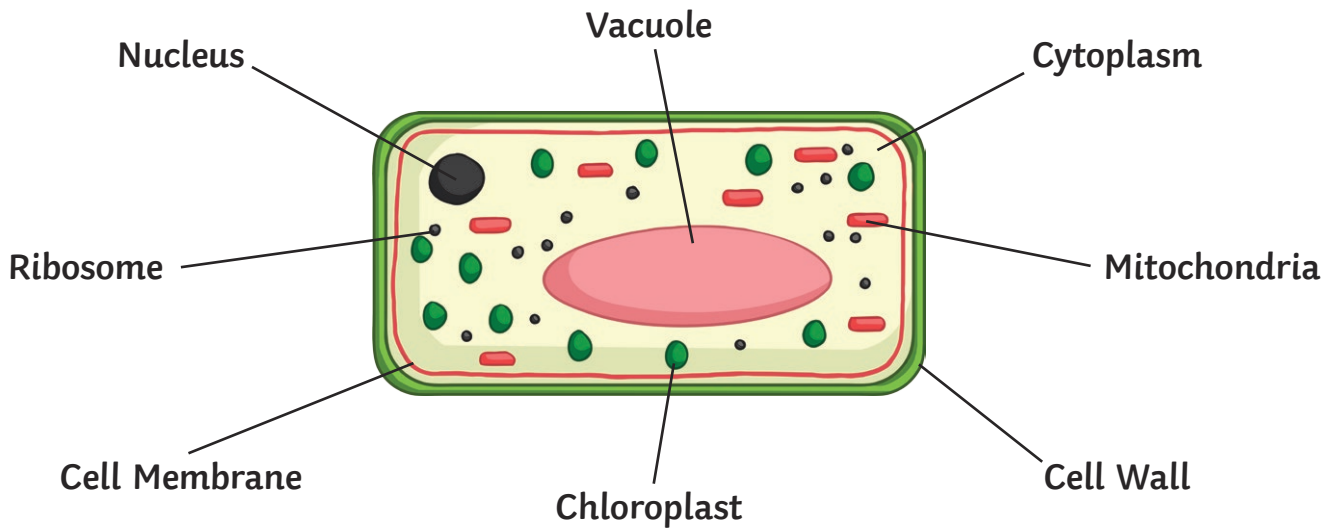


Cells Exam Style Questions 1

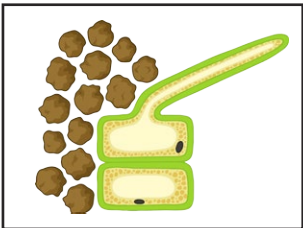


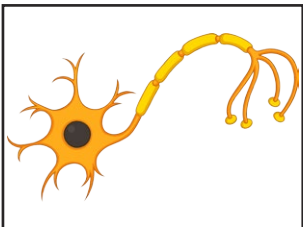
1. A diagram of a typical plant cell is shown above.

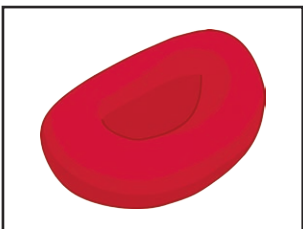
State the function of the following:

- nucleus: _____
- cell wall: _____
- mitochondria: _____
- cell membrane: _____

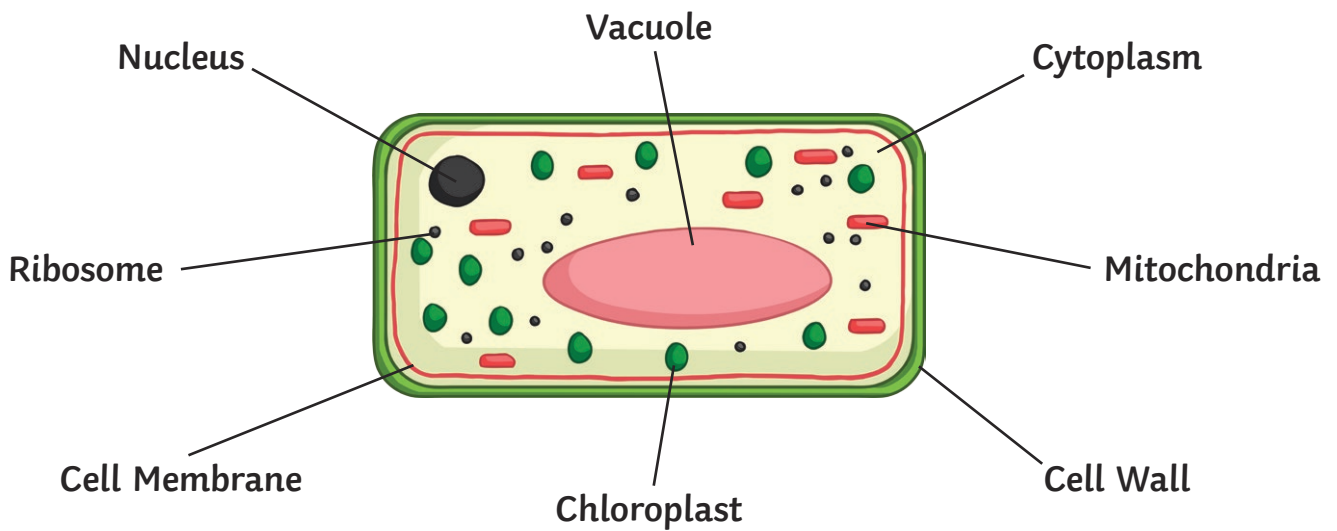
2. Name the specialised cells and state one way in which they have been adapted for their function.







Cells Exam Style Questions 1 Answers

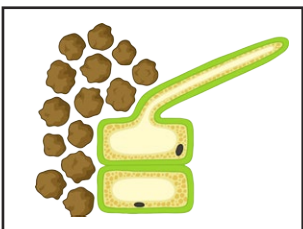


1. A diagram of a typical plant cell is shown above.

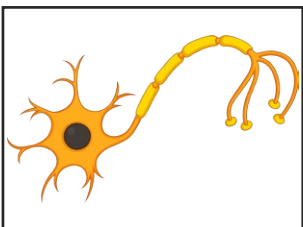
State the function of the following:

- nucleus: **controls the cell's activities, contains genetic information.**
- cell wall: **contains cell sap and strengthens the cell.**
- mitochondria: **respiration occurs in the mitochondria, producing energy.**
- cell membrane: **allows substances in and out of the cell.**

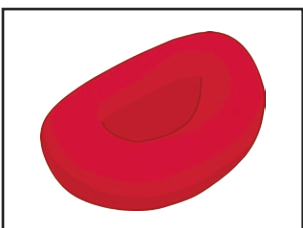
2. Name the specialised cells and state one way in which they have been adapted for their function.



Root Hair Cell - contains no chloroplasts, increases the surface area for the absorption of water.



Nerve Cell - long and thin, to transmit messages around the body.



Red Blood Cell - no nucleus to enable more oxygen to be carried.